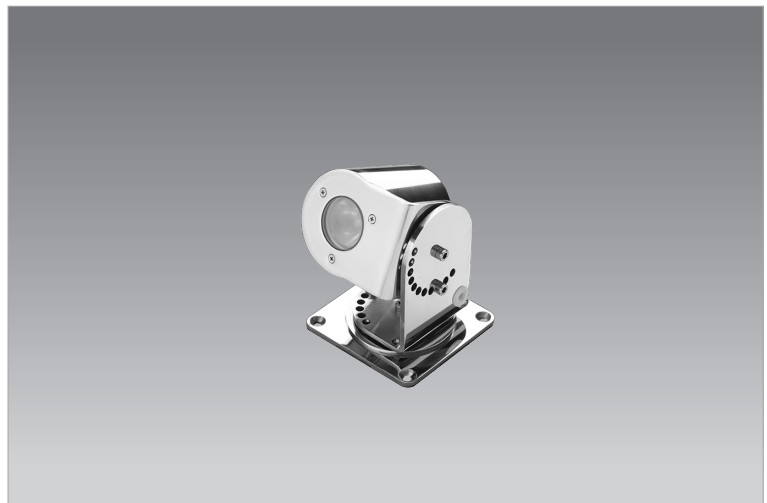


HYDRA MICRO



Features:

- Surface mounting
- IP68 (Dust tight & prolonged water submersion)
- IK10 (20 joule) shock resistance
- Energy efficient chip-on-board (COB) LEDs
- High quality integrated 12V European branded driver (transformer not included)
- Efficiency up to 70lm/W (6000K), 46lm/W (3300K & 4500K)
- White LED available in 3300K (warm white), 4500K (cool white) and 6000K (cool daylight)
- Coloured LED available in:
 - Red
 - Blue
 - Green
 - Amber
- CRI >85
- Fitted with pre-wired 5m of twin 0.75mm² H05RNF flexible cable



DISPLAY

Material:

- Body: stainless steel (316L)
- Frame: stainless steel (316L)
- Mounting bracket: stainless steel (316L)
- Screws: stainless steel (316L)
- Recessing tube: aluminium
- Lens: 4+4mm glass

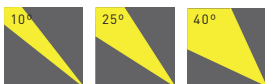
Finish:

- Lens: clear or frosted

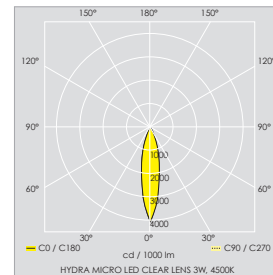
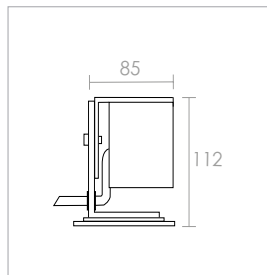
Colour:

- 70 Polished Stainless Steel

Spares:



Technical & Photometrics



Hydra Micro				Ordering Code	
	Voltage	mA	Beam	Clear lens	Frosted lens
1W LED	12V AC or DC	350mA	10°	85-171-111-*70	85-171-121-*70
1W LED	12V AC or DC	350mA	25°	85-171-112-*70	85-171-122-*70
1W LED	12V AC or DC	350mA	40°	85-171-113-*70	85-171-123-*70
3W LED	12V AC or DC	700mA	10°	85-172-111-*70	85-172-121-*70
3W LED	12V AC or DC	700mA	25°	85-172-112-*70	85-172-122-*70
3W LED	12V AC or DC	700mA	40°	85-172-113-*70	85-172-123-*70

*Colour temperature / LED colour: 3 (3300K), 4 (4500K), 6 (6000K), B (Blue), R (Red), A (Amber), G (Green)

