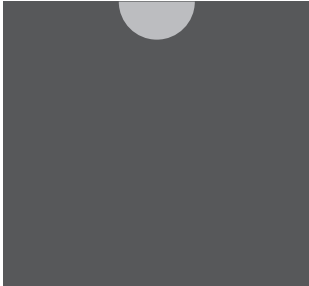


# MIC<sup>®</sup>

MIC<sup>®</sup> (Manual Intelligent Control) is a range of advanced sensors which ensure that the right level of light appears at the right place only when required, thus resulting in energy savings and a reduction in carbon emissions.

There are three types of Manual Intelligent Controls: MIC 1, MIC 2 and MIC 3.

**MIC 1** : A versatile and cost-effective OFF–ON–OFF energy saving control unit.



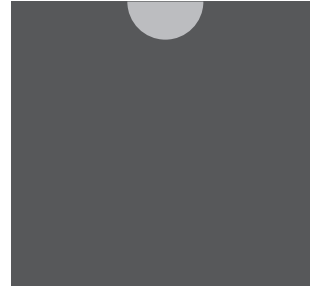
**OFF**

Absence: luminaires are switched off.



**ON**

Occupancy detected: luminaires illuminate at full output unless there is sufficient daylight and the lux level setting overrides it.



**OFF**

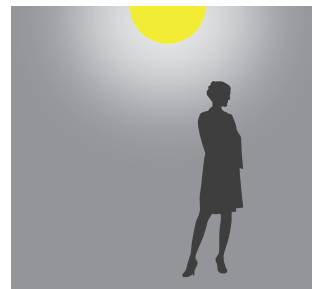
Absence: after a pre-set time, luminaires switch off completely.

**MIC 2** : Offers all the benefits of the MIC 1 but with a DIM–ON–DIM function. MIC 2 is an ideal control for reducing energy consumptions whilst still providing some level of illumination for extra safety.



**DIM**

Absence: luminaires are on at a courtesy pre-set dimmed level. Approximately 20% output.



**ON**

Occupancy detected: luminaires illuminate at full output.



**DIM**

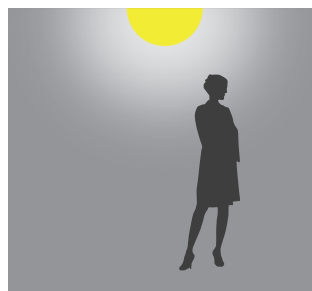
Absence: after a pre-set time of absence, luminaires return to the courtesy pre-set dimmed level.

**MIC 3** : The most flexible energy saving manual control with an OFF–ON–DIM–OFF function, permitting optimal light management.



**OFF**

Absence: luminaires are switched off.



**ON**

Occupancy detected: luminaires illuminate at full output.



**DIM**

Absence: after a pre-set time of absence, luminaires return to the courtesy pre-set dimmed level.

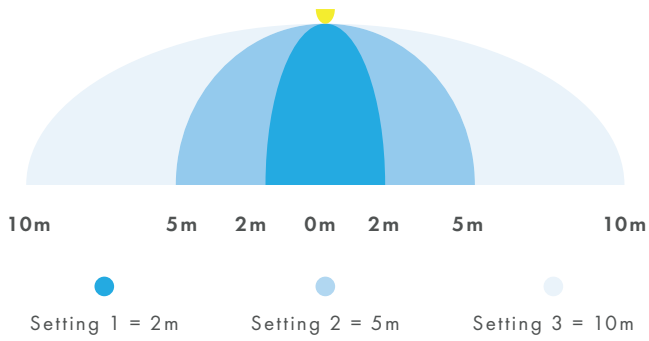


**OFF**

After continued absence over a pre-set time, luminaires switch off completely. If required, the 'off' function can be disabled to operate as a MIC 2.

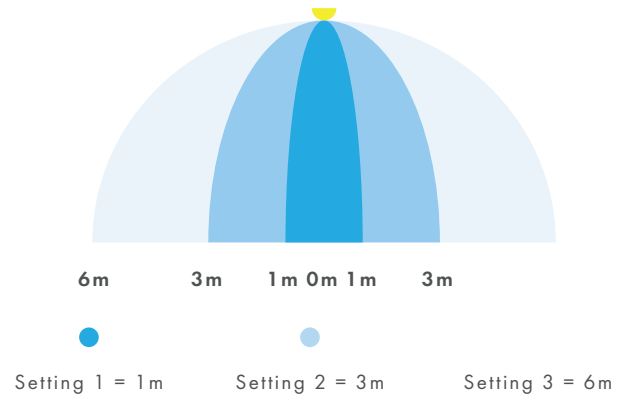
### Detection Area - MIC 1 & 2

Mounting height at 3.5m



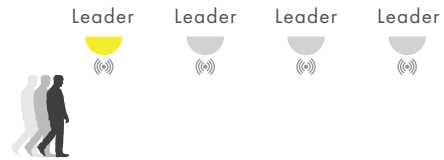
### Detection Area - MIC 3

Mounting height at 8m

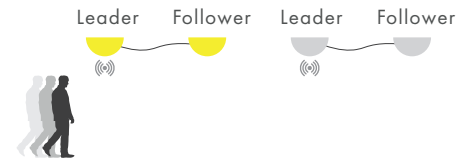


### Typical Installation Options

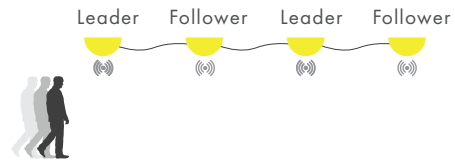
**Option One** - The leaders are all working independently for maximum energy efficiency to create a cascade effect. This is ideal for a retrofit installation.



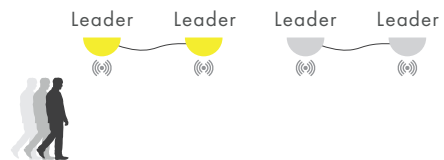
**Option Two** - The leader is working in conjunction with a follower to illuminate a specific zone. The leader will control the follower.



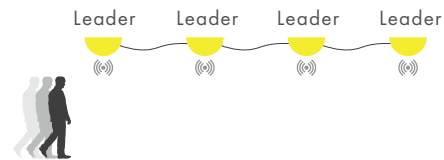
**Option Three** - The leaders and followers are working in conjunction to illuminate a larger area.



**Option Four** - The leaders are working together for increased efficiency and maximum sensitivity in a zoned area.



**Option Five** - The leaders are working together for increased efficiency and maximum sensitivity in a larger area.



MIC Operating Functions and Features	MIC 1	MIC 2	MIC 3
Operating function	DIP Switch	DIP Switch	DIP Switch
Lux level adjustment	0-200lux	N/A	0-200 lux
Time adjustment to courtesy pre-set dimmed level	N/A	2-30 mins	2-30 mins
Time adjustment to switch off completely	5-30 mins	N/A	10-30 mins
Sensitivity (range) adjustment *	2-6 metres	2-6 metres	2-6 metres
Dimming level	N/A	10%	10%
Detection angle	360°	360°	360°
Sensor maximum load (inductive)	400W	400W	400W